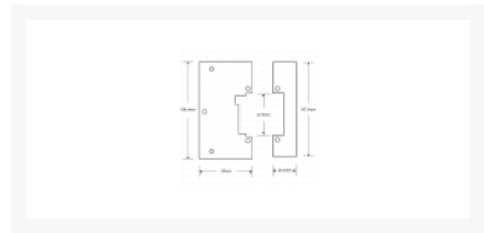
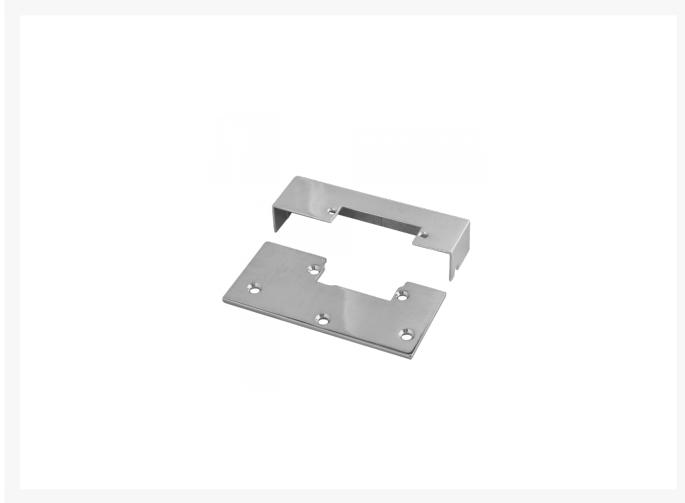




ASEC Rim Release Faceplate Open Inwards





Description

Additional components to convert the following Asec Releases into Rim fitting.
A1,A2,A3,A6,A7,A21,A25 & A95.

Features

- Inward opening only
- To suit following Asec releases: A1,A2,A3,A6,A7,A21,A25 & A95

Product Table

	AS9512 GREY
	AS9511 PB