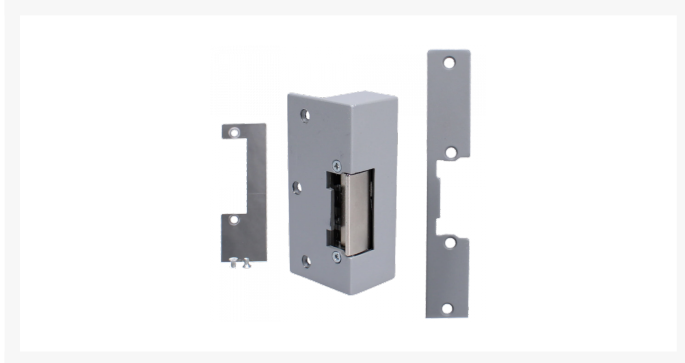




## ASEC Mortice/Rim Release Lock



### Description

---

These electric releases from Asec are supplied with plates for both mortice and rim applications and they are designed for use on timber doors & frames. They are available as either fail locked or fail unlocked and they are supplied with a 1 Year Guarantee.



1 Year Guarantee

### Features

---

- Fail-locked or fail-unlocked available
- Suitable for mortice or rim applications

# Product Table

---

	<p><b>AS11826</b></p> <p>12V AC/DC F/L</p>
	<p><b>AS11827</b></p> <p>12VDC F/U</p>