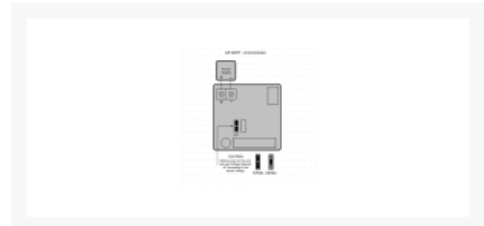




ASEC Slim Line Single Magnet



Description

Designed for single door applications, this slim line magnet with alectro-less nickel plated armature and aluminium housing is available both monitored or unmonitored. It has a holding force up to 600lbs (272kg) and the input voltage is switchable between 12V DC or 24V DC.

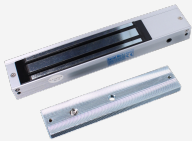


Electronically Monitored

Features

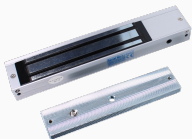
- Holding force up to 600lbs (272kg)
- Operating voltage 12/24Vdc (Selectable)
- Electro-less nickel plated armature
- Aluminium housing
- LED Status (Red/Green) - Monitored version
- Monitored version - Magnetic bond sensor monitor output remotely monitors the door lock or unlock status (N.C output - door opened; N.O output - door closed. (SPDT rated 0.25a at 12Vdc)
- Fail Safe - Power to lock

Product Table



AS12258

12/24VDC Monitored



AS12257

12/24VDC Unmonitored