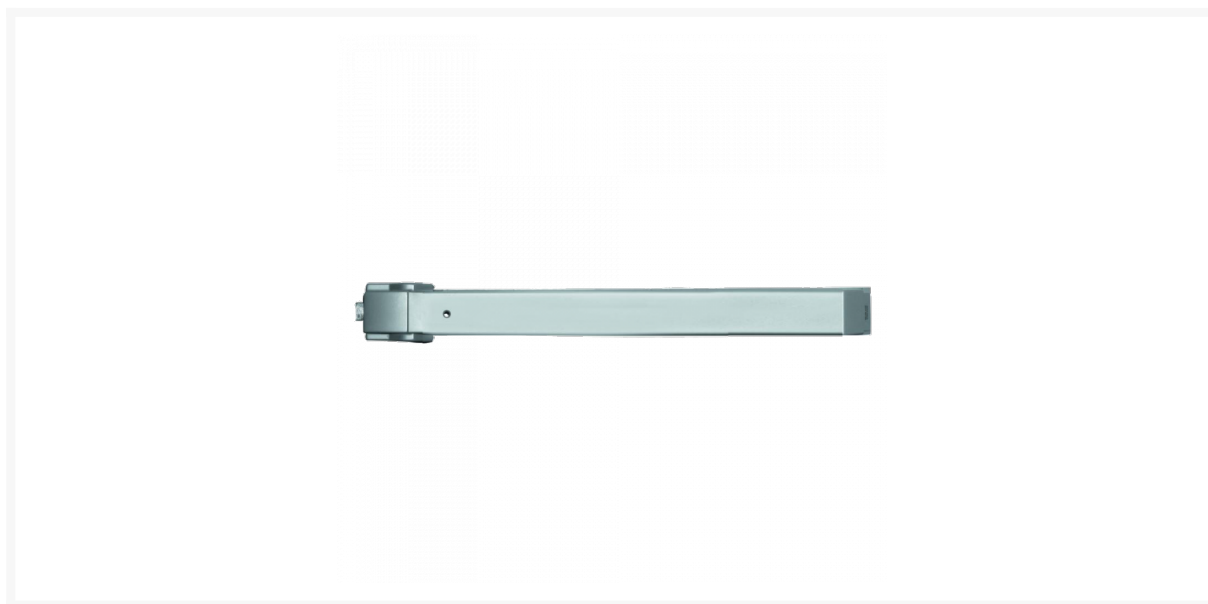




EXIDOR 400 Touch Bar Panic Latch



Description

The Exidor 400 is a surface mounted touch bar panic latch for wooden, single doors up to 900mm wide. Simply pushing the touch bar always provides safe and speedy exit in panic situations, whilst the patented lip prevents accidental jamming of the touch bar. Can be used on steel or aluminium doors when using an appropriate keep (not supplied).



Complies to BS EN
1125



Reversible Handling



UK Manufactured

Features

- Exidor deadlock latch is non handed
- CE marked for safety
- Surface mounted
- Deadlocking latch bolt
- The 400 can be used for doors up to 900mm wide
- push bar to disengage the latch for easy egress from the building in an emergency.

Product Table

	L11571
	SE