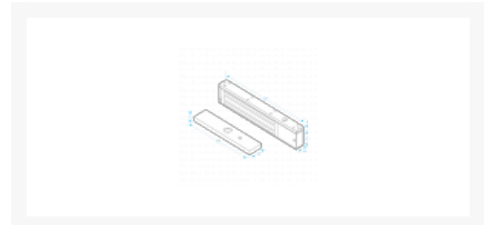




ICS A-Series 12/24VDC Mini Surface Magnet



Description

This mini magnet by ICS security has an operating voltage of either 12V DC or 24V DC. It has a holding force of 272kg (600lbs), operating temperature between 10°C & 55°C (14°F & 131°F) and a current draw of 500mA at 12Vdc, & 250mA at 24Vdc.



1 Year Guarantee

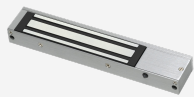


Electronically Monitored

Features

- Holding force of up to 272 kg (600lbs)
- Single surface magnet
- 12 or 24 Vdc operating voltage
- Operating temperature between -10 & 55°C (14 & 131°F)
- Humidity 0 to 95% non-condensing
- Fail-safe

Product Table



L24125

A10001 Non Monitored



L24126

A10002 Monitored



L30074

U10001-DSU With Door Status Non Monitored