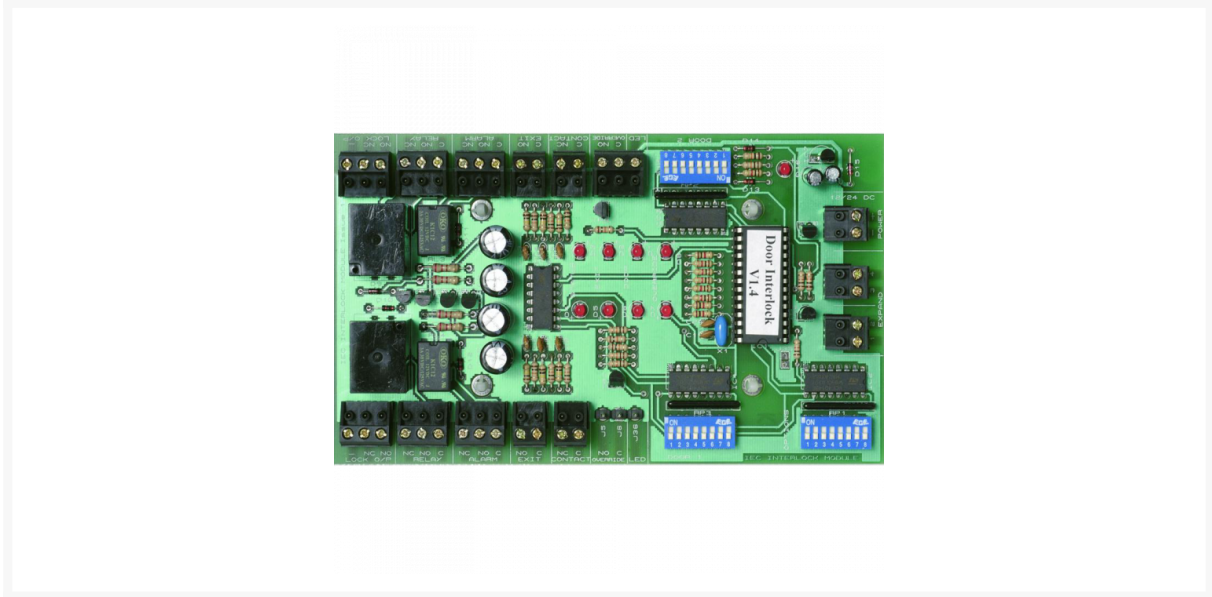




ALPRO IB1 Interlock Board



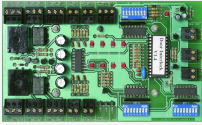
Description

The ALPRO IB1 interlock controller is designed specifically to be used as part of an access control system, with emphasis on the control of doors within that system, which need to be interlocked. Such as when one door is closed and locked the other door can be opened and operated. The interlock controller is a dual voltage unit operating on either 12/24v DC and offers flexibility with pluggable terminal blocks and nylon stick on mountings, which allow for expansion of the units capabilities.

Features

- Fully expandable to infinite number of doors
- Door status LED's
- Independent controls for each door
- Microprocessor controlled logic

Product Table



L13896

Metal Box