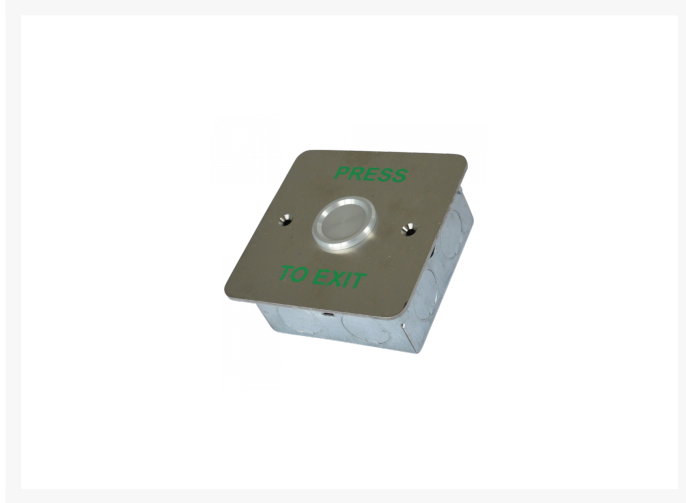




ALPRO Waterproof Exit Button



Description

The Alpro IEC06 range of waterproof exit switches are available in two different sizes – MK 1 gang and narrow style for flush fitting (separate surface mount plates are available). These exit switches are weatherproofed to IP68 protection and require only light pressure to operate. They are tested to in excess of 500,000 cycles and are tamper and vandal resistant.





5 Year Guarantee

Features

- CE Marked
- IP68 rated - highest certification available
- Tamper & vandal resistant switch activation time
- Requires only light pressure to operate
- Cycle tested in excess of 500,000 operations
- Solid state Piezo technology - no moving parts

Product Table

	L18102 1 Gang
	L18103 Narrow